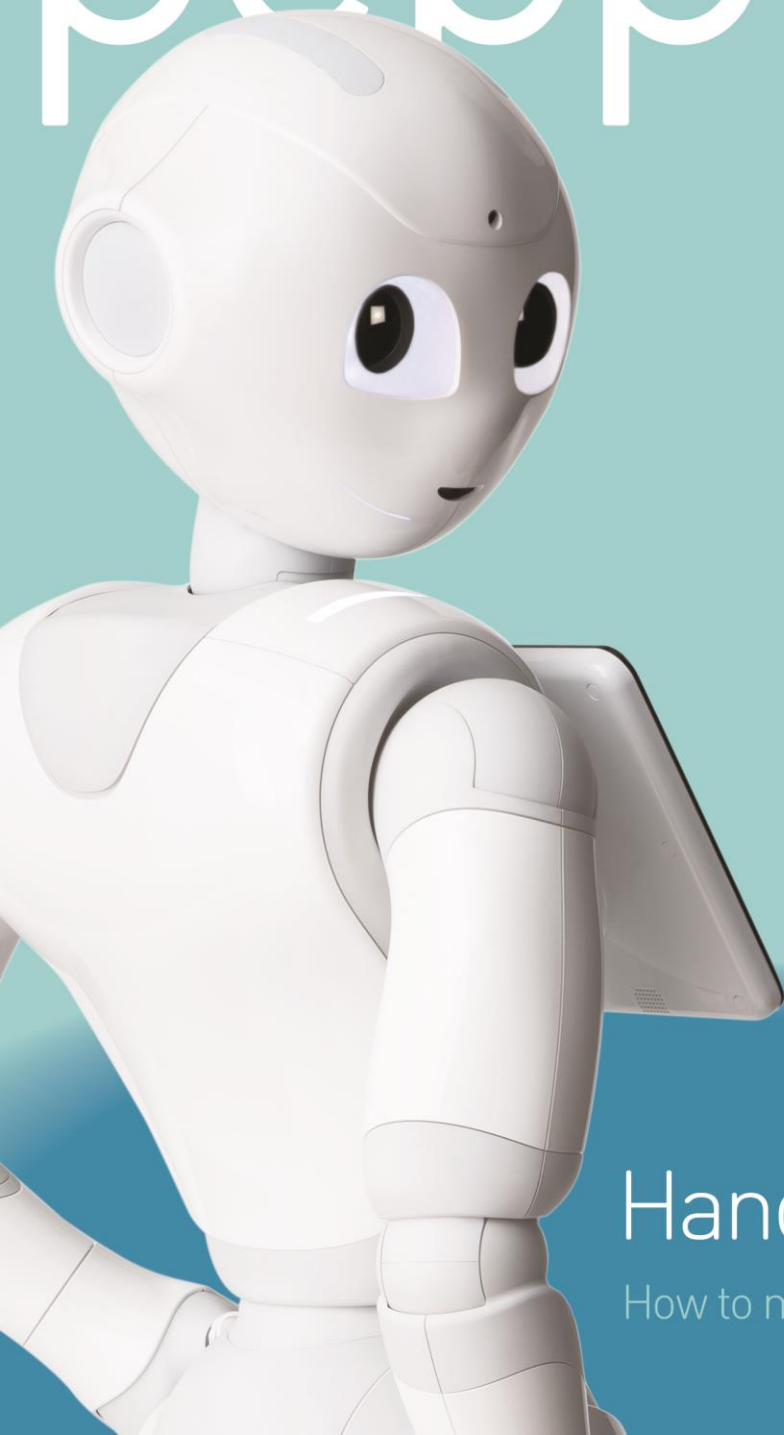


pepper

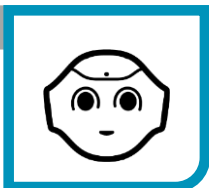
 SoftBank
Robotics



Handbook

How to manage Pepper

2



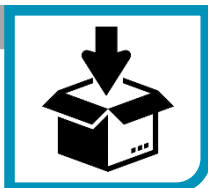
Pepper overview

4



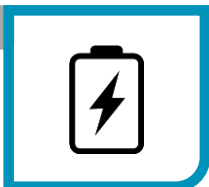
Unboxing

6



Reboxing

8



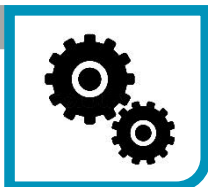
Charging Pepper

9



Stop Button

10



Operating Pepper

12

Interaction with
Pepper

14

Choosing Pepper's
location

15



Daily maintenance

16



Wi-Fi requirements

17



In case of problem

18

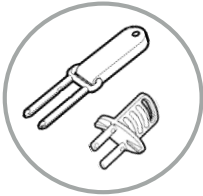


Checklist



Pepper overview

Description



Pins

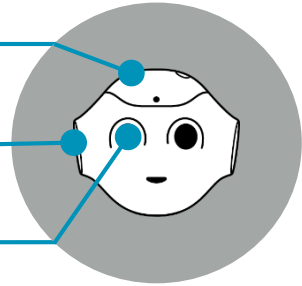
Microphone



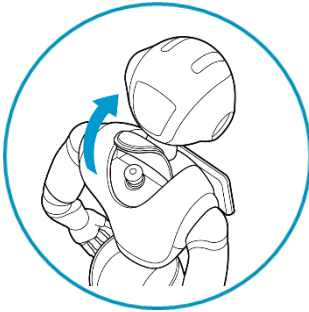
Speaker



Camera



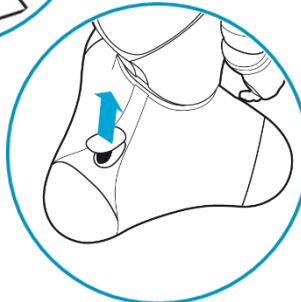
Soft Cover



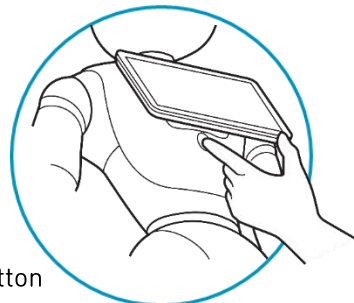
Shoulder LEDs



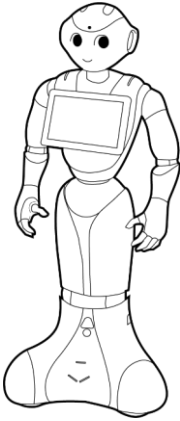
Charging Flap



Chest Button



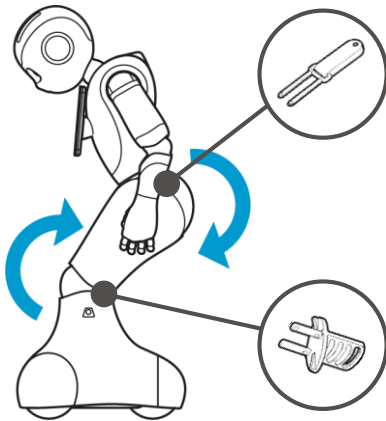
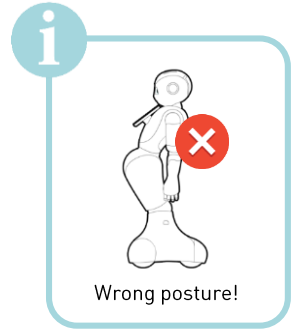
Postures



Standing Posture



Safe Posture



Pins **inserted**



Knee and hip joints
can **move freely**.

Pins **removed**



Knee and hip joints
are **blocked**.



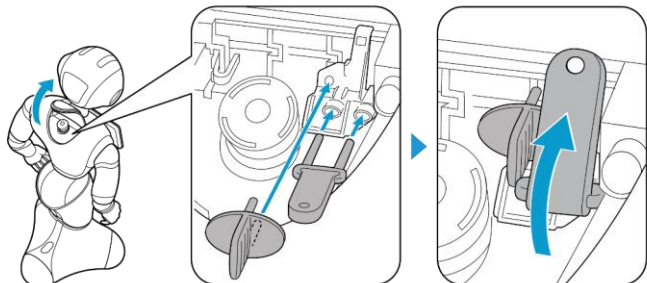
**Do not insert the Pins when Pepper is ON.
Insert the Pins only when:**



- cleaning Pepper.
- reboxing Pepper.
- putting Pepper in Safe Posture.

i

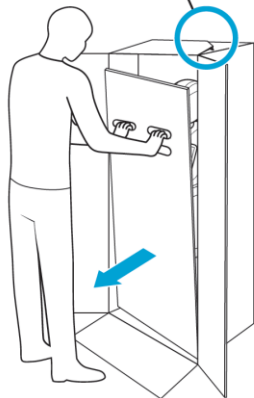
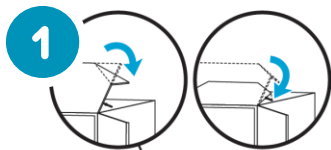
Don't forget to
store the Pins
after use.



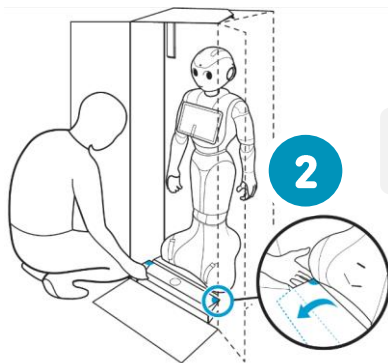


Unboxing

Preparation



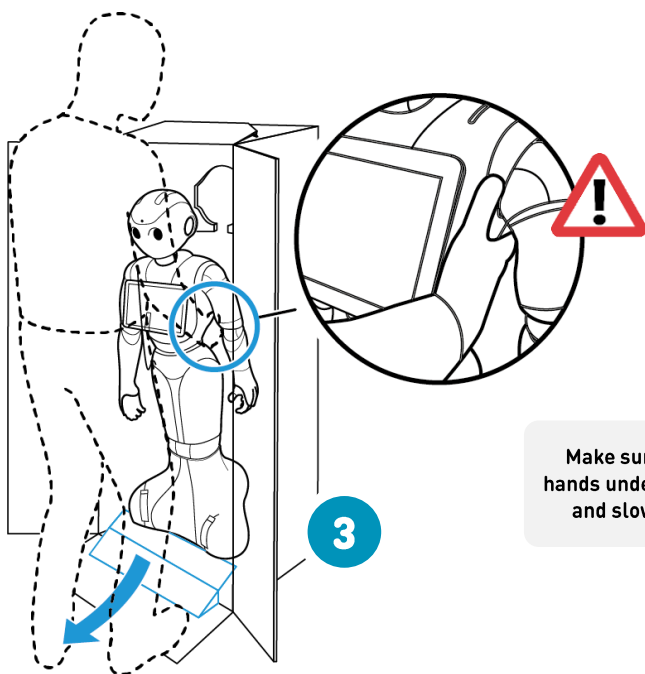
Keep the
box and
protections.



2

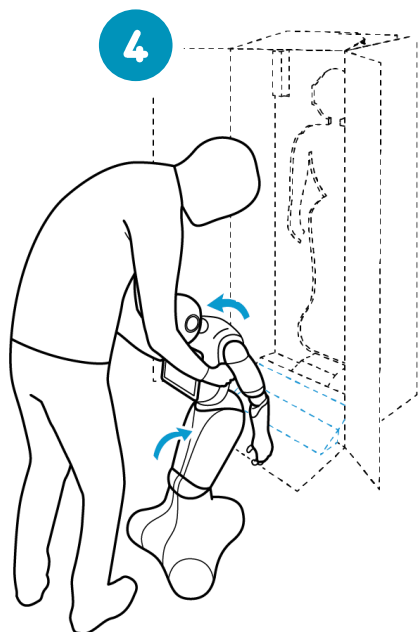
Pull the
ramp out.

Getting Pepper out of the box



3

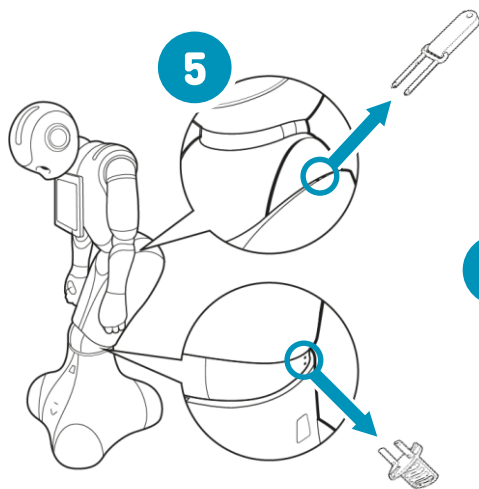
Make sure to place your
hands under Pepper's arms,
and slowly lift Pepper.



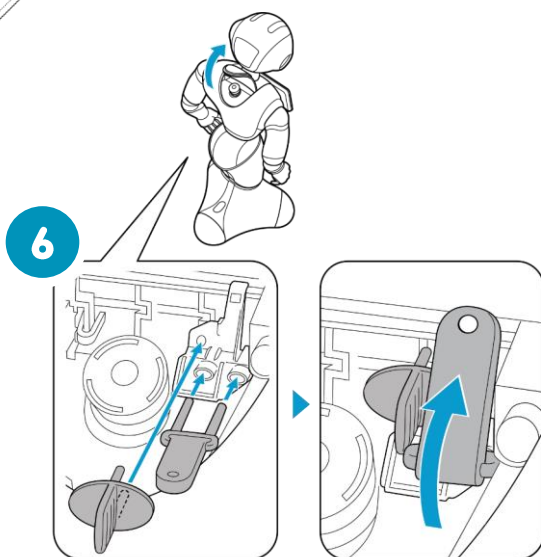
Pepper may be unstable and fall if not put in the right posture.



Getting Pepper ready



Remove the Pins,
and store them.





Reboxing

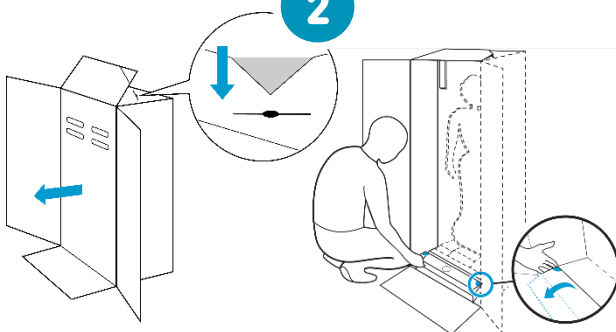
Preparation

1

Pepper must be switched OFF and the Stop Button pushed.

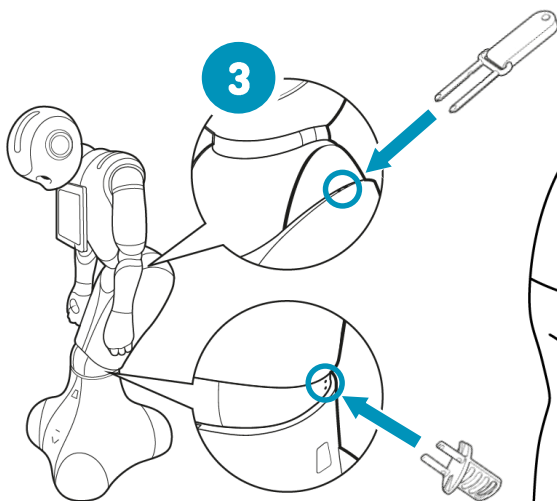


2



Getting Pepper in the box

3



Insert the Pins.

4

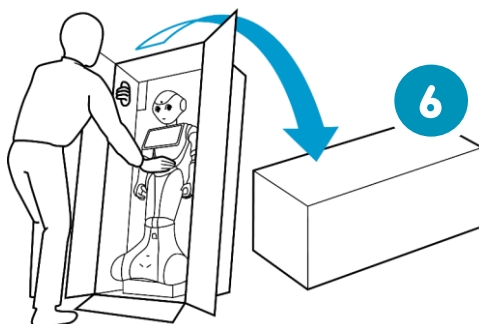


Be careful, when the Pins are inserted, Pepper's knee and hip will move freely.

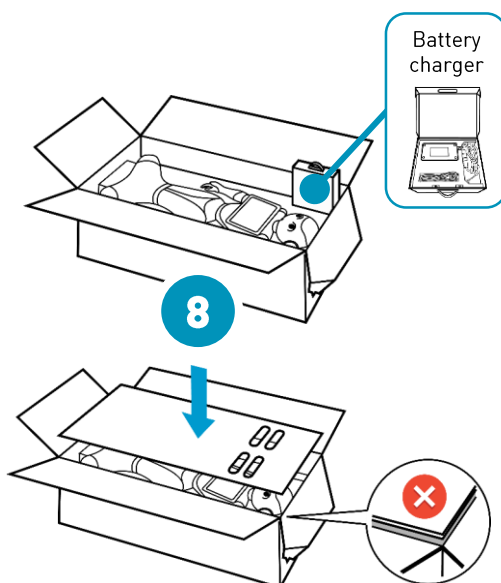
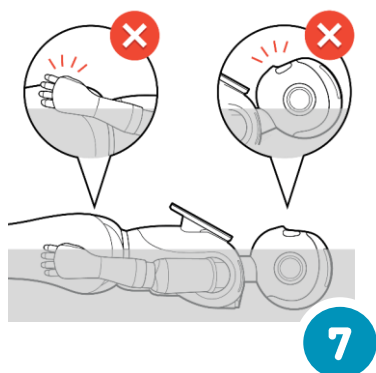
Bring Pepper in front of the box, and make sure the Charging Flap is closed.



Put Pepper in Standing Posture while pushing into the box. **Be careful, Pepper could be unstable.**



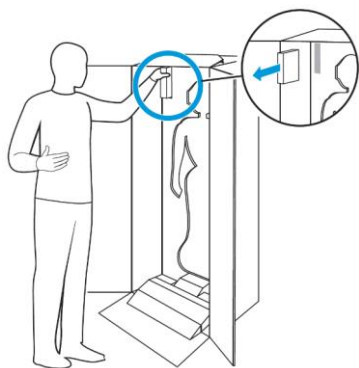
Adjusting Pepper in its box





Charging Pepper

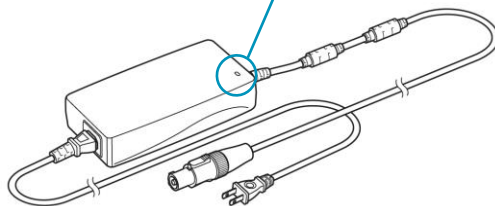
The battery charger



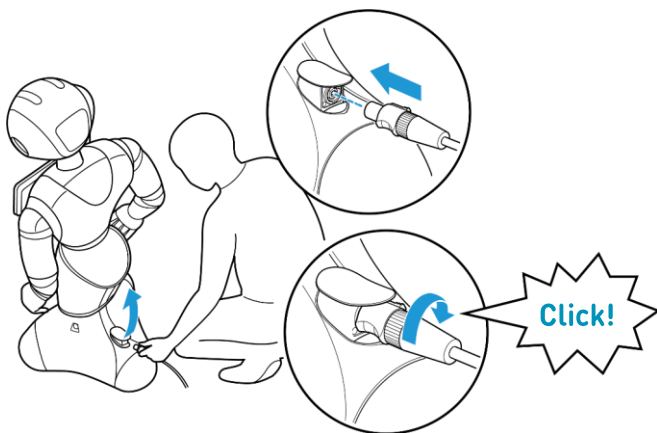
Pepper is charging.



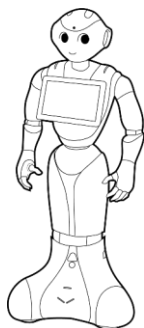
Pepper is fully charged.



Plugging the battery charger



Autonomy & Charging time



A fully charged
Pepper can last
8h~12h
depending on
the activity.



Charging
time

3h30



80%

8h



100%



Battery
level



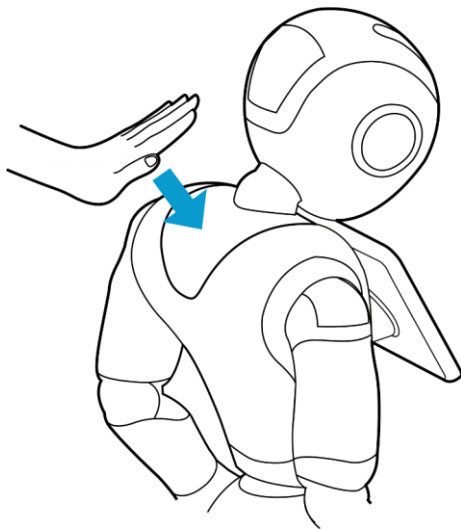
Stop Button

When do I use the Stop Button?



For Security

- When Pepper is switched OFF
- When Pepper is stored or boxed
- During cleaning

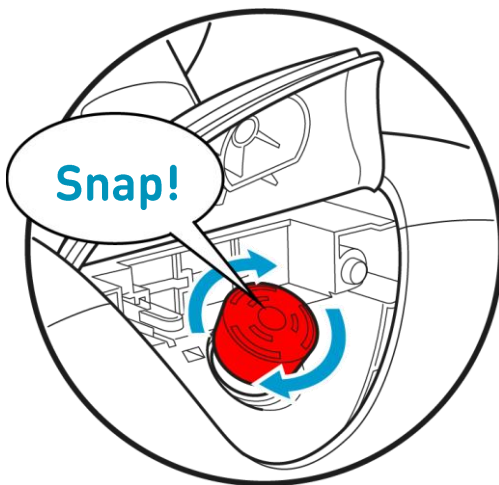
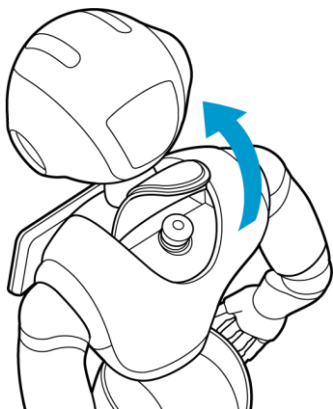


In case of emergency

- Liquid projection
- Pepper has fallen
- Unexpected physical behavior

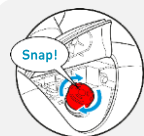
Unlocking

If the Stop Button is pushed down, make sure to unlock it before turning Pepper ON.

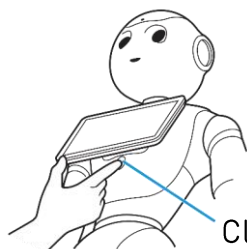




Turning Pepper ON



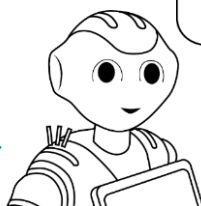
The **Stop Button** has to be unlocked before turning Pepper ON.



Click!

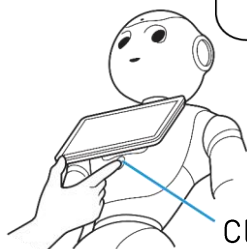


~3 minutes



Ognak
Gnuk!

Turning Pepper OFF



Gnuk
Gnuk!

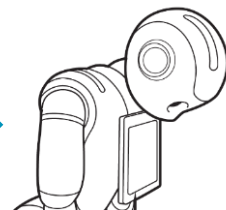
Click



4 seconds



~1 minute

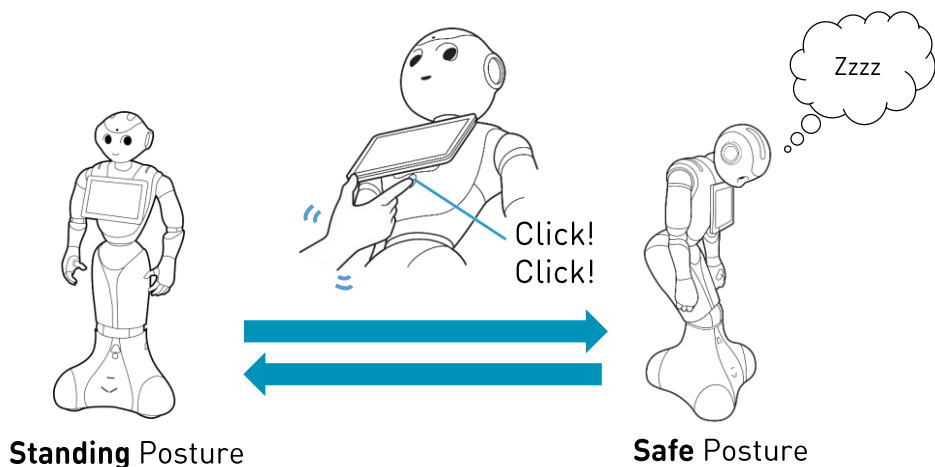


If Pepper doesn't turn OFF using the above method, try to push on the Chest Button during 8 seconds, and **Pepper will switch OFF instantly.**



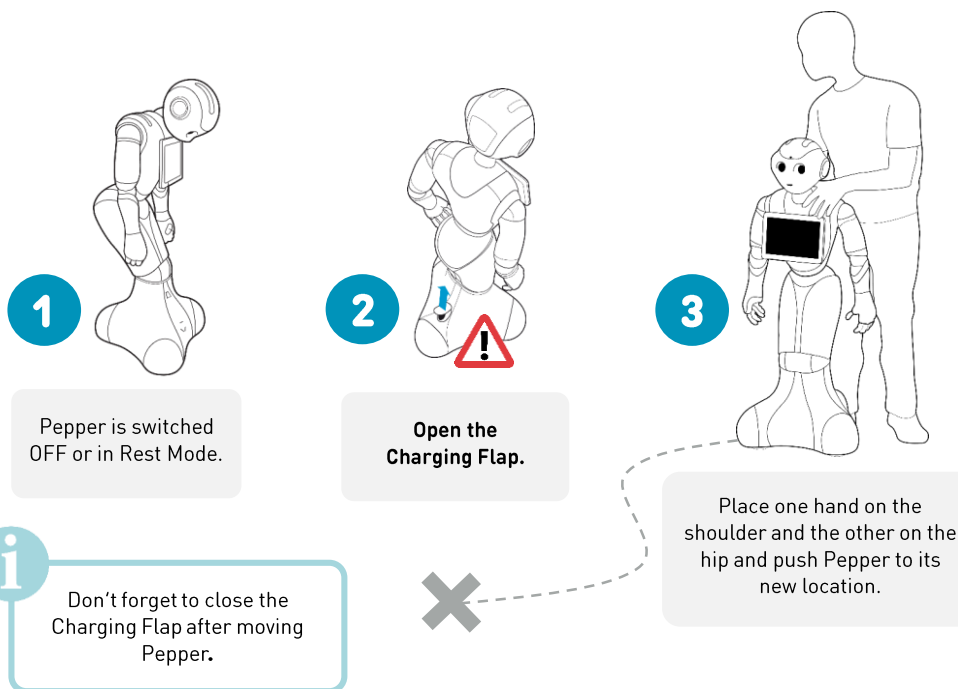
By using this method you could lose all your data.

Rest Mode



In Rest Mode, **Pepper stops its activities and motors**:
it will not be able to speak or move by itself.

Moving Pepper around





Interaction with Pepper

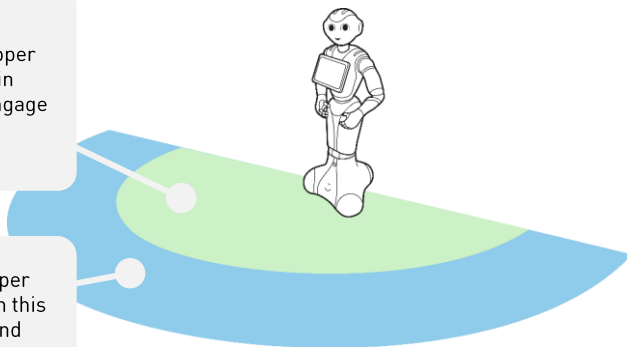
Engagement zone



ZONE 1 When Pepper detects a human in this zone it will engage the conversation.



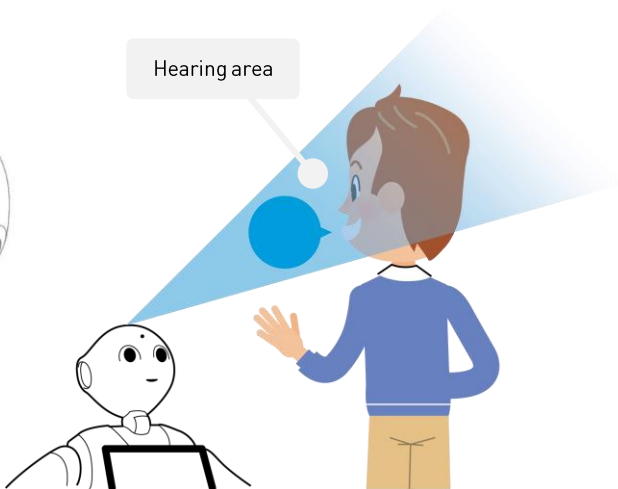
ZONE 2 When Pepper detects a human in this zone it will react and make signs to encourage the interaction.



Microphone Performance



Hearing area

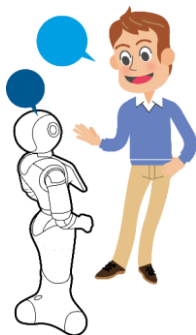


i

Pepper Hearing area is narrow. Keep in mind that **Pepper will only listen where it is looking at!**

Talking with Pepper

Pepper will need some help to understand you:



Make short sentences.



Don't speak too fast!



Make sure Pepper is listening (see below).

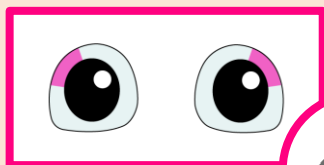


Stay close to Pepper.

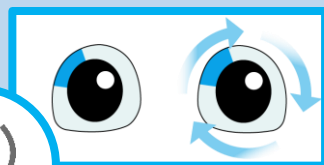
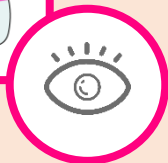
i

Pepper won't listen to you at all times: it needs to see you before!

You can tell what Pepper is doing by **the color of its eyes**.



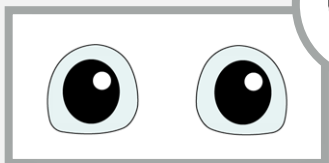
« I have seen you »



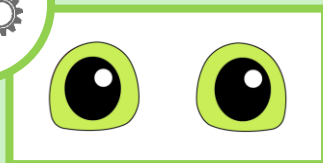
« I am listening »



« I am talking »



« I am thinking »

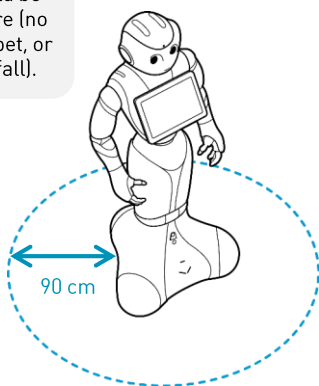




Choosing Pepper's location

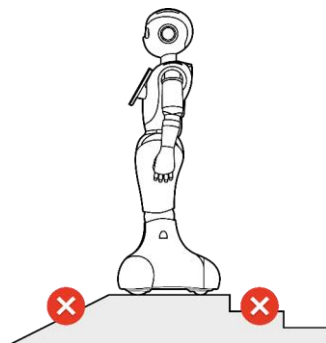
Location

The floor should be flat, dry and bare (no rug or thick carpet, or Pepper could fall).



Make sure that there is at least 90 cm (approximately 3 feet) of free space around Pepper.

Do not put Pepper near steps or slopes as it could fall.



Environment

Pepper should be placed in a quiet zone for voice recognition performance.



Make sure there is no intense light in Pepper's field of view, or interaction could be interrupted.



Pepper is designed for indoor use only.



There should be no obstacle within a range of 2 m in front of Pepper, as it could be recognized as a human.





Daily Maintenance

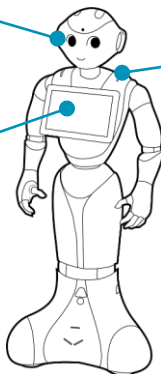
Pepper is operating



To ensure an optimum robot experience, you should **check the following points 2 or 3 times per day.**

Check that Pepper reacts when it sees someone.

Check that the tablet is responding to touch inputs.



Check that the Shoulder LEDs are not blinking.



See « In case of problem » (page 17) if something is wrong.

Cleaning Pepper



You should clean Pepper at least **once a week.**



Make sure that Pepper is switched OFF (Stop Button pushed) and unplugged during cleaning.



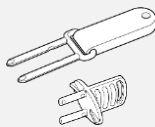
You can use a soft dry cloth, or standard cleaning wipes.



Do not use water.



Do not use alcohol or ammonia-based products.



If needed you can insert the Pins.



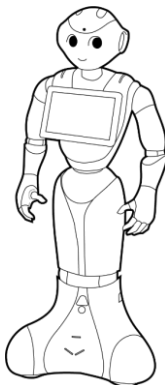
Wi-Fi requirements

Description

Pepper has one Ethernet connection and two Wi-Fi connections. **Only the Head Wi-Fi is required.** WEP, WPA and WPA2 securities are supported. WPA2 is preferred.

Head Wi-Fi

IEEE 802.11 a/b/g/n,
Security 64/128 bit,
WEP, WPA, WPA2 personal



Tablet Wi-Fi

IEEE 802.11 a/b/g/n

Estimated bandwidth

NAOqi

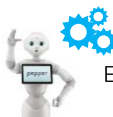
OS update \approx 400 MB



Download applications during
first configuration \approx 300 MB



Update of content already installed on
the robot \approx 30 MB



Every day network traffic \approx 10 MB

Wi-Fi recommendations



Should have:

- Minimum download speed 10 Mb/s
- Minimum upload speed 5 Mb/s
- Signal above -65 dBm
- Maximum latency 50 ms



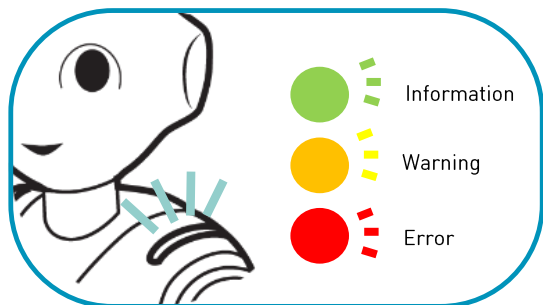
Should avoid:

- Hidden networks
- MAC address filtering
- Port filtering



In case of problem

Your robot doesn't move or speak?
Check if the **Shoulder LEDs** are blinking:



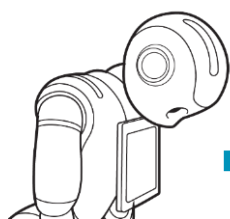
Click!
Push once on the Chest Button to listen to the **notification**.

If Warning or Error

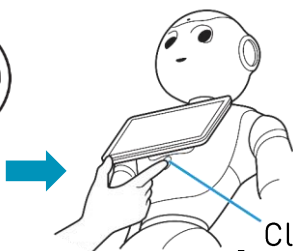
Restart your robot using the below **Special start-up**. It will make Pepper reinstall the firmware of its electronic boards.



Special start-up



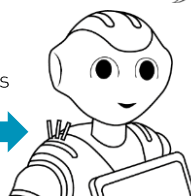
Pepper is switched OFF



~10 minutes



Click
6 seconds
until **Shoulder LEDs** turn blue



Ognak
Gnuk!

If LEDs are not blinking

Try to restart your robot normally. If the problem persists contact Support: <https://account.aldebaran.com/support/>



Checklist

Before contacting Support



Have you unlocked the Stop Button?

Page **9**



Is Pepper's battery fully charged?

Page **8**



Is the Wi-Fi connection working?

Page **16**



Did you try the Special start-up?

Page **17**